

Test Booklet Code

P2

AHJAGA

No. :

This Booklet contains 28 pages.

Do not open this Test Booklet until you are asked to do so.

Important Instructions :

1. The Answer Sheet is inside this Test Booklet. When you are directed to open the Test Booklet, take out the Answer Sheet and fill in the particulars on OFFICE Copy carefully with **blue/black** ball point pen only.
2. The test is of **3 hours** duration and the Test Booklet contains **200** multiple-choice questions (four options with a single correct answer) from **Physics, Chemistry and Biology (Botany and Zoology)**. **50** questions in each subject are divided into **two Sections (A and B)** as per details given below :
 - (a) **Section A** shall consist of **35 (Thirty-five)** Questions in each subject (Question Nos – 1 to 35, 51 to 85, 101 to 135 and 151 to 185). All questions are compulsory.
 - (b) **Section B** shall consist of **15 (Fifteen)** questions in each subject (Question Nos – 36 to 50, 86 to 100, 136 to 150 and 186 to 200). In Section B, a candidate needs to **attempt any 10 (Ten)** questions out of **15 (Fifteen)** in each subject.

Candidates are advised to read all 15 questions in each subject of Section B before they start attempting the question paper. In the event of a candidate attempting more than ten questions, the first ten questions answered by the candidate shall be evaluated.
3. Each question carries **4** marks. For each correct response, the candidate will get **4** marks. For each incorrect response, **one** mark will be deducted from the total scores. **The maximum marks are 720.**
4. Use **Blue/Black Ball Point Pen only** for writing particulars on this page/markings responses on Answer Sheet.
5. Rough work is to be done in the space provided for this purpose in the Test Booklet only.
6. On completion of the test, the candidate **must hand over the Answer Sheet (ORIGINAL and OFFICE Copy) to the Invigilator** before leaving the Room/Hall. The candidates are allowed to take away this Test Booklet with them.
7. **The CODE for this Booklet is P2. Make sure that the CODE printed on the Original Copy of the Answer Sheet is the same as that on this Test Booklet.** In case of discrepancy, the candidate should immediately report the matter to the Invigilator for replacement of both the Test Booklet and the Answer Sheet.
8. The candidates should ensure that the Answer Sheet is not folded. Do not make any stray marks on the Answer Sheet. Do not write your Roll No. anywhere else except in the specified space in the Test Booklet/ Answer Sheet.
9. Use of white fluid for correction is **NOT** permissible on the Answer Sheet.
10. Each candidate must show on-demand his/her Admit Card to the Invigilator.
11. No candidate, without special permission of the centre Superintendent or Invigilator, would leave his/her seat.
12. The candidates should not leave the Examination Hall without handing over their Answer Sheet to the Invigilator on duty and sign (with time) the Attendance Sheet **twice. Cases, where a candidate has not signed the Attendance Sheet second time, will be deemed not to have handed over the Answer Sheet and dealt with as an Unfair Means case.**
13. Use of Electronic/Manual Calculator is prohibited.
14. The candidates are governed by all Rules and Regulations of the examination with regard to their conduct in the Examination Room/Hall. All cases of unfair means will be dealt with as per the Rules and Regulations of this examination.
15. **No part of the Test Booklet and Answer Sheet shall be detached under any circumstances.**
16. The candidates will write the Correct Test Booklet Code as given in the Test Booklet/Answer Sheet in the Attendance Sheet.

Name of the Candidate (in Capitals) : _____

Roll Number : in figures _____

: in words _____

Centre of Examination (in Capitals) : _____

Candidate's Signature : _____ Invigilator's Signature : _____

Facsimile signature stamp of
Centre Superintendent : _____

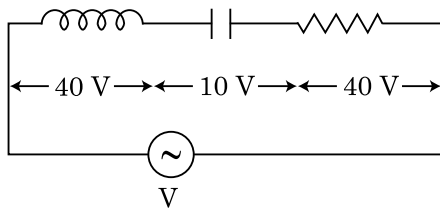
Section - A (Physics)

1. If E and G respectively denote energy and gravitational constant, then $\frac{E}{G}$ has the dimensions of :

- (1) $[M^2] [L^{-2}] [T^{-1}]$
- (2) $[M^2] [L^{-1}] [T^0]$
- (3) $[M] [L^{-1}] [T^{-1}]$
- (4) $[M] [L^0] [T^0]$

2. An inductor of inductance L, a capacitor of capacitance C and a resistor of resistance 'R' are connected in series to an ac source of potential difference 'V' volts as shown in figure.

Potential difference across L, C and R is 40 V, 10 V and 40 V, respectively. The amplitude of current flowing through LCR series circuit is $10\sqrt{2}$ A. The impedance of the circuit is :

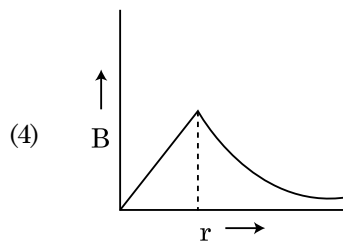
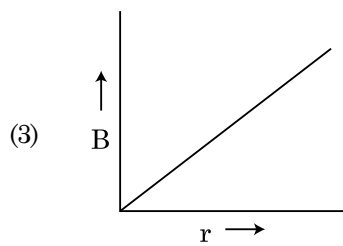
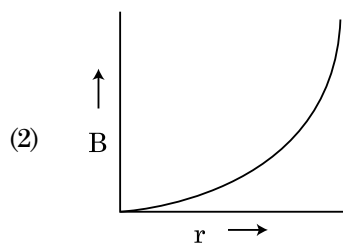
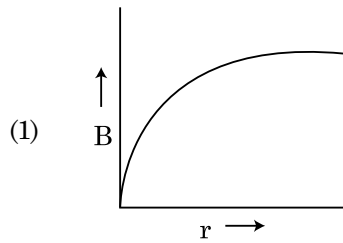


- (1) 5Ω
- (2) $4\sqrt{2} \Omega$
- (3) $5/\sqrt{2} \Omega$
- (4) 4Ω

3. A body is executing simple harmonic motion with frequency 'n', the frequency of its potential energy is :

- (1) $4n$
- (2) n
- (3) $2n$
- (4) $3n$

4. A thick current carrying cable of radius 'R' carries current 'I' uniformly distributed across its cross-section. The variation of magnetic field B(r) due to the cable with the distance 'r' from the axis of the cable is represented by :



5. A nucleus with mass number 240 breaks into two fragments each of mass number 120, the binding energy per nucleon of unfragmented nuclei is 7.6 MeV while that of fragments is 8.5 MeV. The total gain in the Binding Energy in the process is :

- (1) 216 MeV
- (2) 0.9 MeV
- (3) 9.4 MeV
- (4) 804 MeV

6. A parallel plate capacitor has a uniform electric field ' \vec{E} ' in the space between the plates. If the distance between the plates is ' d ' and the area of each plate is ' A ', the energy stored in the capacitor is : (ϵ_0 = permittivity of free space)

- (1) $\frac{E^2 Ad}{\epsilon_0}$
 (2) $\frac{1}{2} \epsilon_0 E^2$
 (3) $\epsilon_0 E A d$
 (4) $\frac{1}{2} \epsilon_0 E^2 A d$

7. The number of photons per second on an average emitted by the source of monochromatic light of wavelength 600 nm, when it delivers the power of 3.3×10^{-3} watt will be : ($h = 6.6 \times 10^{-34}$ Js)

- (1) 10^{15}
 (2) 10^{18}
 (3) 10^{17}
 (4) 10^{16}

8. Polar molecules are the molecules :

- (1) having a permanent electric dipole moment.
 (2) having zero dipole moment.
 (3) acquire a dipole moment only in the presence of electric field due to displacement of charges.
 (4) acquire a dipole moment only when magnetic field is absent.

9. The half-life of a radioactive nuclide is 100 hours. The fraction of original activity that will remain after 150 hours would be :

- (1) $\frac{2}{3\sqrt{2}}$
 (2) $1/2$
 (3) $\frac{1}{2\sqrt{2}}$
 (4) $\frac{2}{3}$

10. A capacitor of capacitance ' C ', is connected across an ac source of voltage V , given by

$$V = V_0 \sin \omega t$$

The displacement current between the plates of the capacitor, would then be given by :

- (1) $I_d = V_0 \omega C \sin \omega t$
 (2) $I_d = V_0 \omega C \cos \omega t$
 (3) $I_d = \frac{V_0}{\omega C} \cos \omega t$
 (4) $I_d = \frac{V_0}{\omega C} \sin \omega t$

11. A screw gauge gives the following readings when used to measure the diameter of a wire

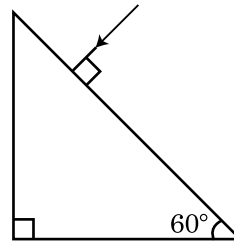
Main scale reading : 0 mm

Circular scale reading : 52 divisions

Given that 1 mm on main scale corresponds to 100 divisions on the circular scale. The diameter of the wire from the above data is :

- (1) 0.052 cm
 (2) 0.52 cm
 (3) 0.026 cm
 (4) 0.26 cm

12. Find the value of the angle of emergence from the prism. Refractive index of the glass is $\sqrt{3}$.



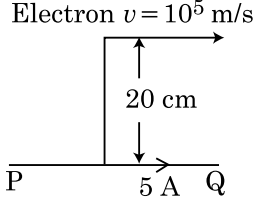
- (1) 90°
 (2) 60°
 (3) 30°
 (4) 45°

13. In a potentiometer circuit a cell of EMF 1.5 V gives balance point at 36 cm length of wire. If another cell of EMF 2.5 V replaces the first cell, then at what length of the wire, the balance point occurs ?

- (1) 62 cm
 (2) 60 cm
 (3) 21.6 cm
 (4) 64 cm

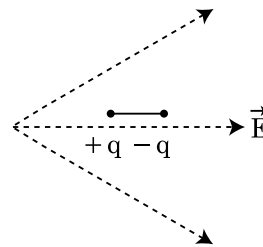
14. A particle is released from height S from the surface of the Earth. At a certain height its kinetic energy is three times its potential energy. The height from the surface of earth and the speed of the particle at that instant are respectively :

- (1) $\frac{S}{4}, \sqrt{\frac{3gS}{2}}$
 (2) $\frac{S}{4}, \frac{3gS}{2}$
 (3) $\frac{S}{4}, \frac{\sqrt{3gS}}{2}$
 (4) $\frac{S}{2}, \frac{\sqrt{3gS}}{2}$

15. The effective resistance of a parallel connection that consists of four wires of equal length, equal area of cross-section and same material is 0.25Ω . What will be the effective resistance if they are connected in series ?
- (1) 4Ω
 - (2) 0.25Ω
 - (3) 0.5Ω
 - (4) 1Ω
16. Water falls from a height of 60 m at the rate of 15 kg/s to operate a turbine. The losses due to frictional force are 10% of the input energy. How much power is generated by the turbine ? ($g = 10 \text{ m/s}^2$)
- (1) 7.0 kW
 - (2) 10.2 kW
 - (3) 8.1 kW
 - (4) 12.3 kW
17. An infinitely long straight conductor carries a current of 5 A as shown. An electron is moving with a speed of 10^5 m/s parallel to the conductor. The perpendicular distance between the electron and the conductor is 20 cm at an instant. Calculate the magnitude of the force experienced by the electron at that instant.
- 
- Electron $v = 10^5 \text{ m/s}$
- 20 cm
- P 5 A Q
- (1) $8 \times 10^{-20} \text{ N}$
 - (2) $4 \times 10^{-20} \text{ N}$
 - (3) $8\pi \times 10^{-20} \text{ N}$
 - (4) $4\pi \times 10^{-20} \text{ N}$
18. Consider the following **statements (A)** and **(B)** and identify the **correct** answer.
- (A)** A zener diode is connected in reverse bias, when used as a voltage regulator.
- (B)** The potential barrier of p-n junction lies between 0.1 V to 0.3 V.
- (1) **(A)** is incorrect but **(B)** is correct.
 - (2) **(A)** and **(B)** both are correct.
 - (3) **(A)** and **(B)** both are incorrect.
 - (4) **(A)** is correct and **(B)** is incorrect.
19. A spring is stretched by 5 cm by a force 10 N. The time period of the oscillations when a mass of 2 kg is suspended by it is :
- (1) 0.628 s
 - (2) 0.0628 s
 - (3) 6.28 s
 - (4) 3.14 s

20. The electron concentration in an n-type semiconductor is the same as hole concentration in a p-type semiconductor. An external field (electric) is applied across each of them. Compare the currents in them.
- (1) No current will flow in p-type, current will only flow in n-type.
 - (2) current in n-type = current in p-type.
 - (3) current in p-type > current in n-type.
 - (4) current in n-type > current in p-type.

21. A dipole is placed in an electric field as shown. In which direction will it move ?



- (1) towards the right as its potential energy will increase.
 - (2) towards the left as its potential energy will increase.
 - (3) towards the right as its potential energy will decrease.
 - (4) towards the left as its potential energy will decrease.
22. A convex lens 'A' of focal length 20 cm and a concave lens 'B' of focal length 5 cm are kept along the same axis with a distance 'd' between them. If a parallel beam of light falling on 'A' leaves 'B' as a parallel beam, then the distance 'd' in cm will be :
- (1) 30
 - (2) 25
 - (3) 15
 - (4) 50
23. The escape velocity from the Earth's surface is v . The escape velocity from the surface of another planet having a radius, four times that of Earth and same mass density is :
- (1) $4 v$
 - (2) v
 - (3) $2 v$
 - (4) $3 v$

24. An electromagnetic wave of wavelength ' λ ' is incident on a photosensitive surface of negligible work function. If ' m ' mass is of photoelectron emitted from the surface has de-Broglie wavelength λ_d , then :

(1) $\lambda = \left(\frac{2h}{mc}\right)\lambda_d^2$

(2) $\lambda = \left(\frac{2m}{hc}\right)\lambda_d^2$

(3) $\lambda_d = \left(\frac{2mc}{h}\right)\lambda^2$

(4) $\lambda = \left(\frac{2mc}{h}\right)\lambda_d^2$

25. A lens of large focal length and large aperture is best suited as an objective of an astronomical telescope since :

- (1) a large aperture contributes to the quality and visibility of the images.
 (2) a large area of the objective ensures better light gathering power.
 (3) a large aperture provides a better resolution.
 (4) all of the above.

26. Two charged spherical conductors of radius R_1 and R_2 are connected by a wire. Then the ratio of surface charge densities of the spheres (σ_1/σ_2) is :

(1) $\frac{R_1^2}{R_2^2}$

(2) $\frac{R_1}{R_2}$

(3) $\frac{R_2}{R_1}$

(4) $\sqrt{\left(\frac{R_1}{R_2}\right)}$

27. For a plane electromagnetic wave propagating in x -direction, which one of the following combination gives the correct possible directions for electric field (E) and magnetic field (B) respectively ?

(1) $-\hat{j} + \hat{k}, -\hat{j} + \hat{k}$

(2) $\hat{j} + \hat{k}, \hat{j} + \hat{k}$

(3) $-\hat{j} + \hat{k}, -\hat{j} - \hat{k}$

(4) $\hat{j} + \hat{k}, -\hat{j} - \hat{k}$

28. A cup of coffee cools from 90°C to 80°C in t minutes, when the room temperature is 20°C . The time taken by a similar cup of coffee to cool from 80°C to 60°C at a room temperature same at 20°C is :

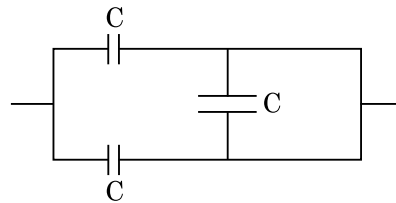
(1) $\frac{5}{13}t$

(2) $\frac{13}{10}t$

(3) $\frac{13}{5}t$

(4) $\frac{10}{13}t$

29. The equivalent capacitance of the combination shown in the figure is :



(1) $3C/2$

(2) $3C$

(3) $2C$

(4) $C/2$

30. If force [F], acceleration [A] and time [T] are chosen as the fundamental physical quantities. Find the dimensions of energy.

(1) $[F][A^{-1}][T]$

(2) $[F][A][T]$

(3) $[F][A][T^2]$

(4) $[F][A][T^{-1}]$

31. A small block slides down on a smooth inclined plane, starting from rest at time $t=0$. Let S_n be the distance travelled by the block in the interval $t = n-1$ to $t = n$. Then, the ratio $\frac{S_n}{S_{n+1}}$ is :

(1) $\frac{2n}{2n-1}$

(2) $\frac{2n-1}{2n}$

(3) $\frac{2n-1}{2n+1}$

(4) $\frac{2n+1}{2n-1}$

32. The velocity of a small ball of mass M and density d , when dropped in a container filled with glycerine becomes constant after some time. If the density of glycerine is $\frac{d}{2}$, then the viscous force acting on the ball will be :

- (1) $2Mg$
- (2) $\frac{Mg}{2}$
- (3) Mg
- (4) $\frac{3}{2}Mg$

33. **Column - I** gives certain physical terms associated with flow of current through a metallic conductor. **Column - II** gives some mathematical relations involving electrical quantities. Match **Column - I** and **Column - II** with appropriate relations.

Column - I	Column - II
(A) Drift Velocity	(P) $\frac{m}{ne^2\rho}$
(B) Electrical Resistivity	(Q) nev_d
(C) Relaxation Period	(R) $\frac{eE}{m}\tau$
(D) Current Density	(S) $\frac{E}{J}$

- (1) (A)-(R), (B)-(Q), (C)-(S), (D)-(P)
- (2) (A)-(R), (B)-(S), (C)-(P), (D)-(Q)
- (3) (A)-(R), (B)-(S), (C)-(Q), (D)-(P)
- (4) (A)-(R), (B)-(P), (C)-(S), (D)-(Q)

34. A radioactive nucleus A_ZX undergoes spontaneous decay in the sequence

${}^A_ZX \rightarrow {}_{Z-1}B \rightarrow {}_{Z-3}C \rightarrow {}_{Z-2}D$, where Z is the atomic number of element X . The possible decay particles in the sequence are :

- (1) β^- , α , β^+
- (2) α , β^- , β^+
- (3) α , β^+ , β^-
- (4) β^+ , α , β^-

35. Match **Column - I** and **Column - II** and choose the **correct** match from the given choices.

Column - I	Column - II
(A) Root mean square speed of gas molecules	(P) $\frac{1}{3}nm\bar{v}^2$
(B) Pressure exerted by ideal gas	(Q) $\sqrt{\frac{3RT}{M}}$
(C) Average kinetic energy of a molecule	(R) $\frac{5}{2}RT$
(D) Total internal energy of 1 mole of a diatomic gas	(S) $\frac{3}{2}k_B T$

- (1) (A) - (R), (B) - (Q), (C) - (P), (D) - (S)
- (2) (A) - (R), (B) - (P), (C) - (S), (D) - (Q)
- (3) (A) - (Q), (B) - (R), (C) - (S), (D) - (P)
- (4) (A) - (Q), (B) - (P), (C) - (S), (D) - (R)

Section - B (Physics)

36. In the product

$$\vec{F} = q \left(\vec{v} \times \vec{B} \right)$$

$$= q \vec{v} \times \left(B \hat{i} + B \hat{j} + B_0 \hat{k} \right)$$

For $q=1$ and $\vec{v} = 2\hat{i} + 4\hat{j} + 6\hat{k}$ and

$$\vec{F} = 4\hat{i} - 20\hat{j} + 12\hat{k}$$

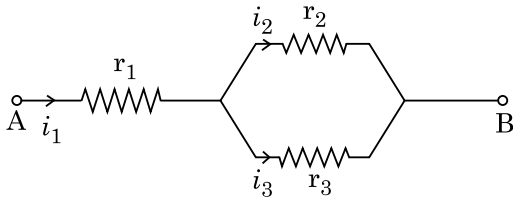
What will be the complete expression for \vec{B} ?

- (1) $6\hat{i} + 6\hat{j} - 8\hat{k}$
- (2) $-8\hat{i} - 8\hat{j} - 6\hat{k}$
- (3) $-6\hat{i} - 6\hat{j} - 8\hat{k}$
- (4) $8\hat{i} + 8\hat{j} - 6\hat{k}$

37. From a circular ring of mass 'M' and radius 'R' an arc corresponding to a 90° sector is removed. The moment of inertia of the remaining part of the ring about an axis passing through the centre of the ring and perpendicular to the plane of the ring is 'K' times MR^2 . Then the value of 'K' is :

- (1) $\frac{1}{8}$
 (2) $\frac{3}{4}$
 (3) $\frac{7}{8}$
 (4) $\frac{1}{4}$

38. Three resistors having resistances r_1 , r_2 and r_3 are connected as shown in the given circuit. The ratio $\frac{i_3}{i_1}$ of currents in terms of resistances used in the circuit is :



- (1) $\frac{r_2}{r_1 + r_3}$
 (2) $\frac{r_1}{r_2 + r_3}$
 (3) $\frac{r_2}{r_2 + r_3}$
 (4) $\frac{r_1}{r_1 + r_2}$
39. A ball of mass 0.15 kg is dropped from a height 10 m, strikes the ground and rebounds to the same height. The magnitude of impulse imparted to the ball is ($g = 10 \text{ m/s}^2$) nearly :
- (1) 1.4 kg m/s
 (2) 0 kg m/s
 (3) 4.2 kg m/s
 (4) 2.1 kg m/s
40. A step down transformer connected to an ac mains supply of 220 V is made to operate at 11 V, 44 W lamp. Ignoring power losses in the transformer, what is the current in the primary circuit ?
- (1) 4 A
 (2) 0.2 A
 (3) 0.4 A
 (4) 2 A

41. A uniform conducting wire of length $12a$ and resistance 'R' is wound up as a current carrying coil in the shape of,

- (i) an equilateral triangle of side 'a'.
 (ii) a square of side 'a'.

The magnetic dipole moments of the coil in each case respectively are :

- (1) $4 Ia^2$ and $3 Ia^2$
 (2) $\sqrt{3} Ia^2$ and $3 Ia^2$
 (3) $3 Ia^2$ and Ia^2
 (4) $3 Ia^2$ and $4 Ia^2$
42. A particle of mass 'm' is projected with a velocity $v = kV_e$ ($k < 1$) from the surface of the earth.

($V_e = \text{escape velocity}$)

The maximum height above the surface reached by the particle is :

- (1) $\frac{Rk^2}{1-k^2}$
 (2) $R \left(\frac{k}{1-k} \right)^2$
 (3) $R \left(\frac{k}{1+k} \right)^2$
 (4) $\frac{R^2k}{1+k}$
43. A series LCR circuit containing 5.0 H inductor, $80 \mu\text{F}$ capacitor and 40Ω resistor is connected to 230 V variable frequency ac source. The angular frequencies of the source at which power transferred to the circuit is half the power at the resonant angular frequency are likely to be :
- (1) 42 rad/s and 58 rad/s
 (2) 25 rad/s and 75 rad/s
 (3) 50 rad/s and 25 rad/s
 (4) 46 rad/s and 54 rad/s

44. A particle moving in a circle of radius R with a uniform speed takes a time T to complete one revolution.

If this particle were projected with the same speed at an angle ' θ ' to the horizontal, the maximum height attained by it equals $4R$. The angle of projection, θ , is then given by :

(1) $\theta = \sin^{-1} \left(\frac{2gT^2}{\pi^2 R} \right)^{1/2}$

(2) $\theta = \cos^{-1} \left(\frac{gT^2}{\pi^2 R} \right)^{1/2}$

(3) $\theta = \cos^{-1} \left(\frac{\pi^2 R}{gT^2} \right)^{1/2}$

(4) $\theta = \sin^{-1} \left(\frac{\pi^2 R}{gT^2} \right)^{1/2}$

45. Two conducting circular loops of radii R_1 and R_2 are placed in the same plane with their centres coinciding. If $R_1 \gg R_2$, the mutual inductance M between them will be directly proportional to :

(1) $\frac{R_2^2}{R_1}$

(2) $\frac{R_1}{R_2}$

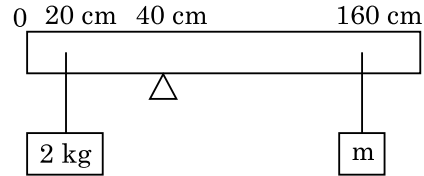
(3) $\frac{R_2}{R_1}$

(4) $\frac{R_1^2}{R_2}$

46. Twenty seven drops of same size are charged at 220 V each. They combine to form a bigger drop. Calculate the potential of the bigger drop.

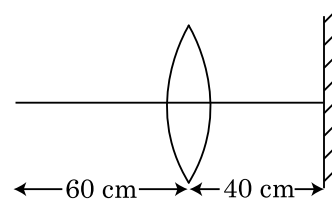
- (1) 1980 V
- (2) 660 V
- (3) 1320 V
- (4) 1520 V

47. A uniform rod of length 200 cm and mass 500 g is balanced on a wedge placed at 40 cm mark. A mass of 2 kg is suspended from the rod at 20 cm and another unknown mass ' m ' is suspended from the rod at 160 cm as shown in the figure. Find the value of ' m ' such that the rod is in equilibrium. ($g = 10 \text{ m/s}^2$)



- (1) $\frac{1}{12}$ kg
- (2) $\frac{1}{2}$ kg
- (3) $\frac{1}{3}$ kg
- (4) $\frac{1}{6}$ kg

48. A point object is placed at a distance of 60 cm from a convex lens of focal length 30 cm. If a plane mirror were put perpendicular to the principal axis of the lens and at a distance of 40 cm from it, the final image would be formed at a distance of :

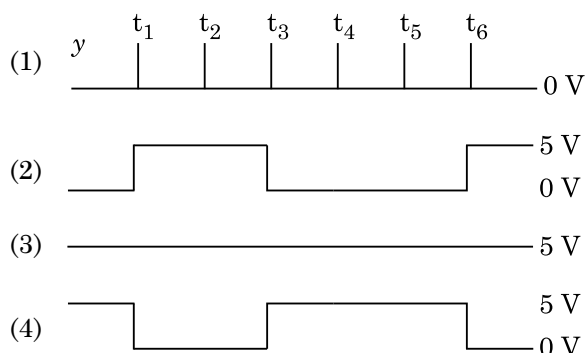
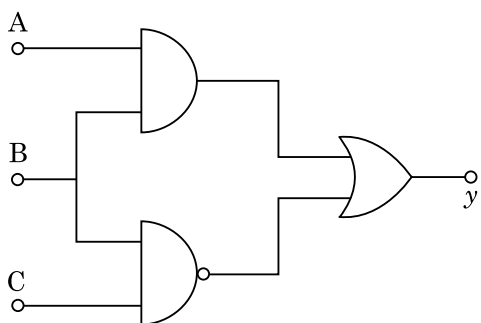
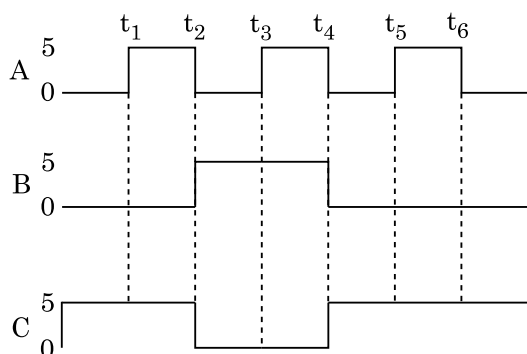


- (1) 20 cm from the plane mirror, it would be a virtual image.
- (2) 20 cm from the lens, it would be a real image.
- (3) 30 cm from the lens, it would be a real image.
- (4) 30 cm from the plane mirror, it would be a virtual image.

49. A car starts from rest and accelerates at 5 m/s^2 . At $t = 4 \text{ s}$, a ball is dropped out of a window by a person sitting in the car. What is the velocity and acceleration of the ball at $t = 6 \text{ s}$? (Take $g = 10 \text{ m/s}^2$)

- (1) $20\sqrt{2} \text{ m/s}$, 10 m/s^2
- (2) 20 m/s , 5 m/s^2
- (3) 20 m/s , 0
- (4) $20\sqrt{2} \text{ m/s}$, 0

50. For the given circuit, the input digital signals are applied at the terminals A, B and C. What would be the output at the terminal y?



Section - A (Chemistry)

51. The **incorrect** statement among the following is :
- (1) Actinoids are highly reactive metals, especially when finely divided.
 - (2) Actinoid contraction is greater for element to element than Lanthanoid contraction.
 - (3) Most of the trivalent Lanthanoid ions are colorless in the solid state.
 - (4) Lanthanoids are good conductors of heat and electricity.

52. Given below are two statements :

Statement I :

Aspirin and Paracetamol belong to the class of narcotic analgesics.

Statement II :

Morphine and Heroin are non-narcotic analgesics. In the light of the above statements, choose the **correct** answer from the options given below.

- (1) **Statement I** is incorrect but **Statement II** is true.
- (2) Both **Statement I** and **Statement II** are true.
- (3) Both **Statement I** and **Statement II** are false.
- (4) **Statement I** is correct but **Statement II** is false.

53. **Statement I :**

Acid strength increases in the order given as $\text{HF} \ll \text{HCl} \ll \text{HBr} \ll \text{HI}$.

Statement II :

As the size of the elements F, Cl, Br, I increases down the group, the bond strength of HF, HCl, HBr and HI decreases and so the acid strength increases.

In the light of the above statements, choose the **correct** answer from the options given below.

- (1) **Statement I** is incorrect but **Statement II** is true.
- (2) Both **Statement I** and **Statement II** are true.
- (3) Both **Statement I** and **Statement II** are false.
- (4) **Statement I** is correct but **Statement II** is false.

54. Which one among the following is the correct option for right relationship between C_P and C_V for one mole of ideal gas ?

- (1) $C_V = RC_P$
- (2) $C_P + C_V = R$
- (3) $C_P - C_V = R$
- (4) $C_P = RC_V$

55. The correct option for the number of body centred unit cells in all 14 types of Bravais lattice unit cells is :

- (1) 3
- (2) 7
- (3) 5
- (4) 2

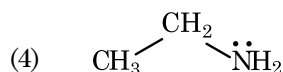
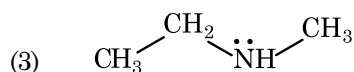
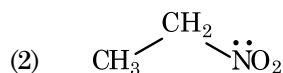
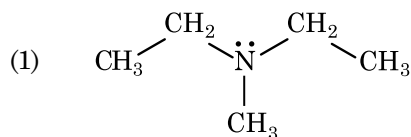
56. Among the following alkaline earth metal halides, one which is covalent and soluble in organic solvents is :

- (1) Beryllium chloride
- (2) Calcium chloride
- (3) Strontium chloride
- (4) Magnesium chloride

57. Tritium, a radioactive isotope of hydrogen, emits which of the following particles ?
 (1) Neutron (n)
 (2) Beta (β^-)
 (3) Alpha (α)
 (4) Gamma (γ)
58. The maximum temperature that can be achieved in blast furnace is :
 (1) upto 5000 K
 (2) upto 1200 K
 (3) upto 2200 K
 (4) upto 1900 K
59. BF_3 is planar and electron deficient compound. Hybridization and number of electrons around the central atom, respectively are :
 (1) sp^2 and 8
 (2) sp^3 and 4
 (3) sp^3 and 6
 (4) sp^2 and 6
60. The major product of the following chemical reaction is :

$$\begin{array}{c} \text{CH}_3 \\ \diagdown \\ \text{CH} - \text{CH} = \text{CH}_2 \\ \diagup \\ \text{CH}_3 \end{array} + \text{HBr} \xrightarrow{(\text{C}_6\text{H}_5\text{CO})_2\text{O}_2} ?$$
 (1) $\begin{array}{c} \text{CH}_3 \\ \diagdown \\ \text{CBr} - \text{CH}_2 - \text{CH}_3 \\ \diagup \\ \text{CH}_3 \end{array}$
 (2) $\begin{array}{c} \text{CH}_3 \\ \diagdown \\ \text{CH} - \text{CH}_2 - \text{CH}_2 - \text{Br} \\ \diagup \\ \text{CH}_3 \end{array}$
 (3) $\begin{array}{c} \text{CH}_3 \\ \diagdown \\ \text{CH} - \text{CH}_2 - \text{CH}_2 - \text{O} - \text{COC}_6\text{H}_5 \\ \diagup \\ \text{CH}_3 \end{array}$
 (4) $\begin{array}{c} \text{CH}_3 \\ \diagdown \\ \text{CH} - \text{CH} - \text{CH}_3 \\ \diagup \quad | \\ \text{CH}_3 \quad \text{Br} \end{array}$
61. The molar conductance of NaCl, HCl and CH_3COONa at infinite dilution are 126.45, 426.16 and $91.0 \text{ S cm}^2 \text{ mol}^{-1}$ respectively. The molar conductance of CH_3COOH at infinite dilution is. Choose the right option for your answer.
 (1) $540.48 \text{ S cm}^2 \text{ mol}^{-1}$
 (2) $201.28 \text{ S cm}^2 \text{ mol}^{-1}$
 (3) $390.71 \text{ S cm}^2 \text{ mol}^{-1}$
 (4) $698.28 \text{ S cm}^2 \text{ mol}^{-1}$
62. A particular station of All India Radio, New Delhi, broadcasts on a frequency of 1,368 kHz (kilohertz). The wavelength of the electromagnetic radiation emitted by the transmitter is : [speed of light, $c = 3.0 \times 10^8 \text{ ms}^{-1}$]
 (1) 21.92 cm
 (2) 219.3 m
 (3) 219.2 m
 (4) 2192 m
63. Which of the following reactions is the metal displacement reaction ? Choose the right option.
 (1) $2\text{Pb}(\text{NO}_3)_2 \rightarrow 2\text{PbO} + 4\text{NO}_2 + \text{O}_2 \uparrow$
 (2) $2\text{KClO}_3 \xrightarrow{\Delta} 2\text{KCl} + 3\text{O}_2$
 (3) $\text{Cr}_2\text{O}_3 + 2\text{Al} \xrightarrow{\Delta} \text{Al}_2\text{O}_3 + 2\text{Cr}$
 (4) $\text{Fe} + 2\text{HCl} \rightarrow \text{FeCl}_2 + \text{H}_2 \uparrow$
64. The right option for the statement "Tyndall effect is exhibited by", is :
 (1) Urea solution
 (2) NaCl solution
 (3) Glucose solution
 (4) Starch solution
65. The compound which shows metamerism is :
 (1) $\text{C}_4\text{H}_{10}\text{O}$
 (2) C_5H_{12}
 (3) $\text{C}_3\text{H}_8\text{O}$
 (4) $\text{C}_3\text{H}_6\text{O}$
66. Match List - I with List - II.
- | | List - I | List - II |
|-----|----------------|---------------------------|
| (a) | PCl_5 | (i) Square pyramidal |
| (b) | SF_6 | (ii) Trigonal planar |
| (c) | BrF_5 | (iii) Octahedral |
| (d) | BF_3 | (iv) Trigonal bipyramidal |
- Choose the **correct** answer from the options given below.
 (1) (a)-(iv), (b)-(iii), (c)-(ii), (d)-(i)
 (2) (a)-(iv), (b)-(iii), (c)-(i), (d)-(ii)
 (3) (a)-(ii), (b)-(iii), (c)-(iv), (d)-(i)
 (4) (a)-(iii), (b)-(i), (c)-(iv), (d)-(ii)
67. Which one of the following polymers is prepared by addition polymerisation ?
 (1) Dacron
 (2) Teflon
 (3) Nylon-66
 (4) Novolac
68. The RBC deficiency is deficiency disease of :
 (1) Vitamin B_2
 (2) Vitamin B_{12}
 (3) Vitamin B_6
 (4) Vitamin B_1

69. Identify the compound that will react with Hinsberg's reagent to give a solid which dissolves in alkali.



70. Zr (Z = 40) and Hf (Z = 72) have similar atomic and ionic radii because of :

- (1) having similar chemical properties
- (2) belonging to same group
- (3) diagonal relationship
- (4) lanthanoid contraction

71. Ethylene diaminetetraacetate (EDTA) ion is :

- (1) Tridentate ligand with three "N" donor atoms
- (2) Hexadentate ligand with four "O" and two "N" donor atoms
- (3) Unidentate ligand
- (4) Bidentate ligand with two "N" donor atoms

72. The major product formed in dehydrohalogenation reaction of 2-Bromo pentane is Pent-2-ene. This product formation is based on ?

- (1) Huckel's Rule
- (2) Saytzeff's Rule
- (3) Hund's Rule
- (4) Hofmann Rule

73. An organic compound contains 78% (by wt.) carbon and remaining percentage of hydrogen. The right option for the empirical formula of this compound is : [Atomic wt. of C is 12, H is 1]

- (1) CH₄
- (2) CH
- (3) CH₂
- (4) CH₃

74. The pK_b of dimethylamine and pK_a of acetic acid are 3.27 and 4.77 respectively at T (K). The correct option for the pH of dimethylammonium acetate solution is :

- (1) 6.25
- (2) 8.50
- (3) 5.50
- (4) 7.75

75. The structures of beryllium chloride in solid state and vapour phase, are :

- (1) Chain in both
- (2) Chain and dimer, respectively
- (3) Linear in both
- (4) Dimer and Linear, respectively

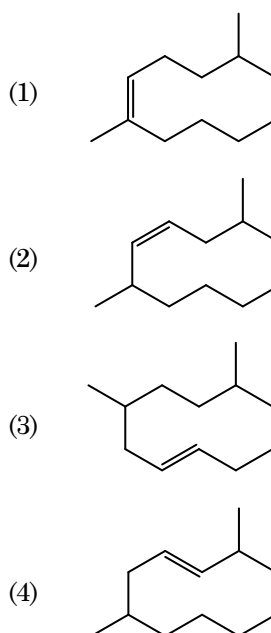
76. Which one of the following methods can be used to obtain highly pure metal which is liquid at room temperature ?

- (1) Zone refining
- (2) Electrolysis
- (3) Chromatography
- (4) Distillation

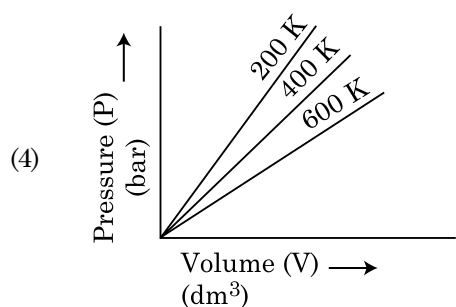
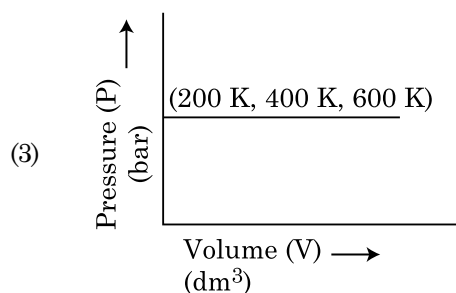
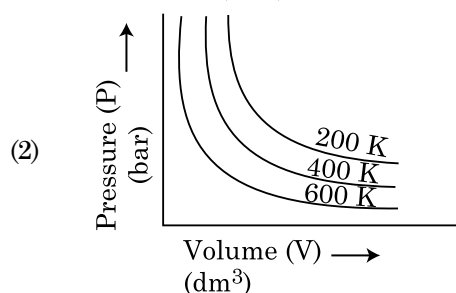
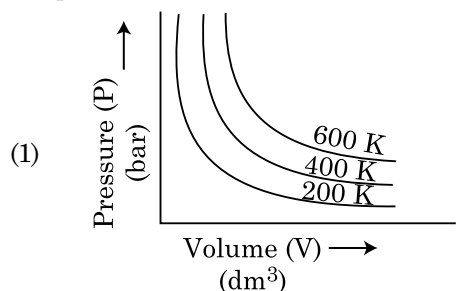
77. Right option for the number of tetrahedral and octahedral voids in hexagonal primitive unit cell are :

- (1) 12, 6
- (2) 8, 4
- (3) 6, 12
- (4) 2, 1

78. The correct structure of 2,6-Dimethyl-dec-4-ene is :



79. Choose the correct option for graphical representation of Boyle's law, which shows a graph of pressure vs. volume of a gas at different temperatures :



80. The following solutions were prepared by dissolving 10 g of glucose ($C_6H_{12}O_6$) in 250 ml of water (P_1), 10 g of urea (CH_4N_2O) in 250 ml of water (P_2) and 10 g of sucrose ($C_{12}H_{22}O_{11}$) in 250 ml of water (P_3). The right option for the decreasing order of osmotic pressure of these solutions is :

- (1) $P_3 > P_1 > P_2$
- (2) $P_2 > P_1 > P_3$
- (3) $P_1 > P_2 > P_3$
- (4) $P_2 > P_3 > P_1$

81. The correct sequence of bond enthalpy of 'C-X' bond is :

- (1) $CH_3-Cl > CH_3-F > CH_3-Br > CH_3-I$
- (2) $CH_3-F < CH_3-Cl < CH_3-Br < CH_3-I$
- (3) $CH_3-F > CH_3-Cl > CH_3-Br > CH_3-I$
- (4) $CH_3-F < CH_3-Cl > CH_3-Br > CH_3-I$

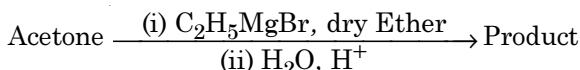
82. Dihedral angle of least stable conformer of ethane is :

- (1) 0°
- (2) 120°
- (3) 180°
- (4) 60°

83. Noble gases are named because of their inertness towards reactivity. Identify an **incorrect** statement about them.

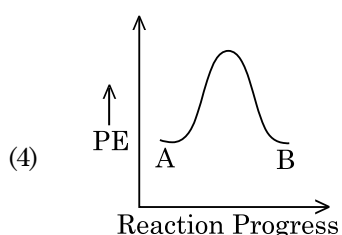
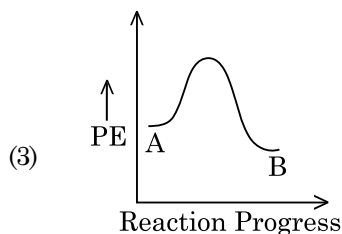
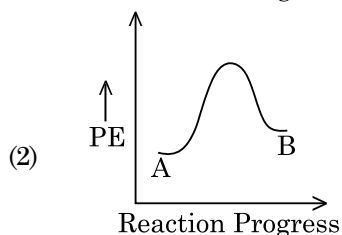
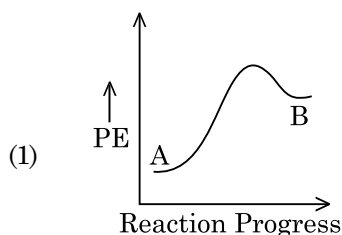
- (1) Noble gases have large positive values of electron gain enthalpy.
- (2) Noble gases are sparingly soluble in water.
- (3) Noble gases have very high melting and boiling points.
- (4) Noble gases have weak dispersion forces.

84. What is the IUPAC name of the organic compound formed in the following chemical reaction ?



- (1) 2-methyl butan-2-ol
- (2) 2-methyl propan-2-ol
- (3) pentan-2-ol
- (4) pentan-3-ol

85. For a reaction $A \rightarrow B$, enthalpy of reaction is -4.2 kJ mol^{-1} and enthalpy of activation is 9.6 kJ mol^{-1} . The correct potential energy profile for the reaction is shown in option.



Section - B (Chemistry)

86. Match List - I with List - II.

List - I	List - II
(a) $2\text{SO}_2(\text{g}) + \text{O}_2(\text{g}) \rightarrow 2\text{SO}_3(\text{g})$	(i) Acid rain
(b) $\text{HOCl}(\text{g}) \xrightarrow{h\nu} \dot{\text{O}}\text{H} + \dot{\text{Cl}}$	(ii) Smog
(c) $\text{CaCO}_3 + \text{H}_2\text{SO}_4 \rightarrow \text{CaSO}_4 + \text{H}_2\text{O} + \text{CO}_2$	(iii) Ozone depletion
(d) $\text{NO}_2(\text{g}) \xrightarrow{h\nu} \text{NO}(\text{g}) + \text{O}(\text{g})$	(iv) Tropospheric pollution

Choose the **correct** answer from the options given below.

- (1) (a)-(iii), (b)-(ii), (c)-(iv), (d)-(i)
- (2) (a)-(i), (b)-(ii), (c)-(iii), (d)-(iv)
- (3) (a)-(ii), (b)-(iii), (c)-(iv), (d)-(i)
- (4) (a)-(iv), (b)-(iii), (c)-(i), (d)-(ii)

87. $\text{CH}_3\text{CH}_2\text{COO}^- \text{Na}^+ \xrightarrow[\text{Heat}]{\text{NaOH, + ?}} \text{CH}_3\text{CH}_3 + \text{Na}_2\text{CO}_3$.

Consider the above reaction and identify the missing reagent/chemical.

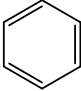
- (1) DIBAL-H
- (2) B_2H_6
- (3) Red Phosphorus
- (4) CaO

88. The correct option for the value of vapour pressure of a solution at 45°C with benzene to octane in molar ratio 3 : 2 is :

[At 45°C vapour pressure of benzene is 280 mm Hg and that of octane is 420 mm Hg. Assume Ideal gas]

- (1) 350 mm of Hg
- (2) 160 mm of Hg
- (3) 168 mm of Hg
- (4) 336 mm of Hg

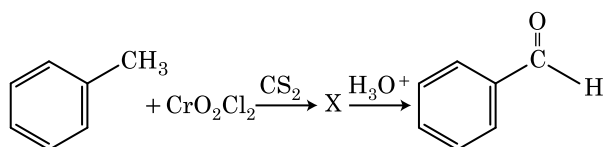
89. Match List - I with List - II.

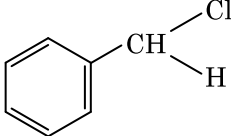
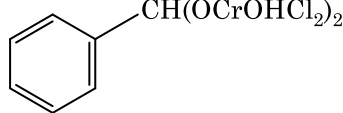
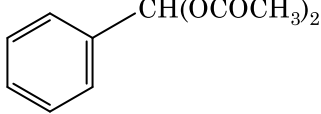
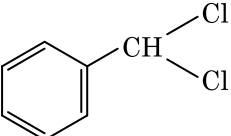
List - I	List - II
(a)  $\xrightarrow[\text{CuCl}]{\text{CO, HCl, Anhyd. AlCl}_3}$	(i) Hell-Volhard-Zelinsky reaction
(b) $\text{R}-\overset{\text{O}}{\parallel}{\text{C}}-\text{CH}_3 + \text{NaOX} \longrightarrow$	(ii) Gattermann-Koch reaction
(c) $\text{R}-\text{CH}_2-\text{OH} + \text{R}'\text{COOH} \xrightarrow{\text{Conc. H}_2\text{SO}_4}$	(iii) Haloform reaction
(d) $\text{R}-\text{CH}_2\text{COOH} \xrightarrow[\text{(ii) H}_2\text{O}]{\text{(i) X}_2/\text{Red P}}$	(iv) Esterification

Choose the **correct** answer from the options given below.

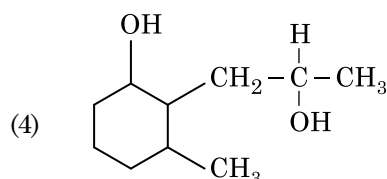
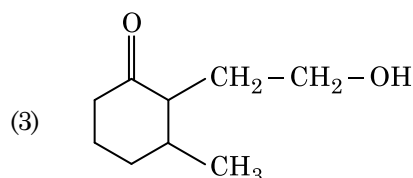
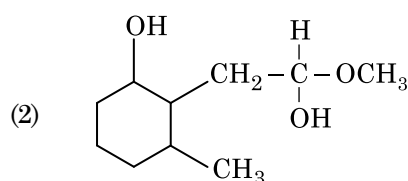
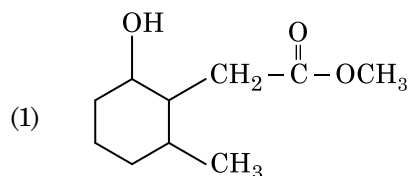
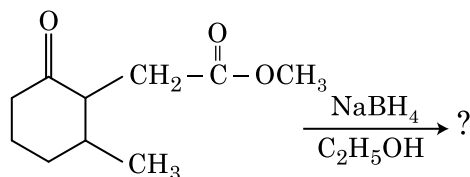
- (1) (a)-(ii), (b)-(iii), (c)-(iv), (d)-(i)
- (2) (a)-(iv), (b)-(i), (c)-(ii), (d)-(iii)
- (3) (a)-(iii), (b)-(ii), (c)-(i), (d)-(iv)
- (4) (a)-(i), (b)-(iv), (c)-(iii), (d)-(ii)

90. The intermediate compound 'X' in the following chemical reaction is :



- (1) 
- (2) 
- (3) 
- (4) 

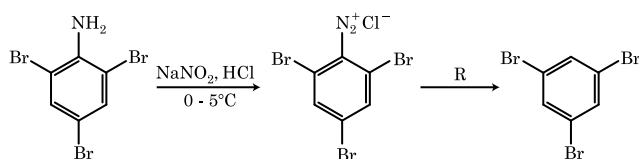
91. The product formed in the following chemical reaction is :



92. The slope of Arrhenius Plot $\left(\ln k \text{ v/s } \frac{1}{T}\right)$ of first order reaction is $-5 \times 10^3 \text{ K}$. The value of E_a of the reaction is. Choose the correct option for your answer.

[Given $R = 8.314 \text{ J K}^{-1} \text{ mol}^{-1}$]

- (1) -83 kJ mol^{-1}
 (2) 41.5 kJ mol^{-1}
 (3) 83.0 kJ mol^{-1}
 (4) 166 kJ mol^{-1}
93. The reagent 'R' in the given sequence of chemical reaction is :



- (1) CuCN/KCN
 (2) H_2O
 (3) $\text{CH}_3\text{CH}_2\text{OH}$
 (4) HI

94. For irreversible expansion of an ideal gas under isothermal condition, the correct option is :

- (1) $\Delta U \neq 0, \Delta S_{\text{total}} = 0$
 (2) $\Delta U = 0, \Delta S_{\text{total}} = 0$
 (3) $\Delta U \neq 0, \Delta S_{\text{total}} \neq 0$
 (4) $\Delta U = 0, \Delta S_{\text{total}} \neq 0$

95. From the following pairs of ions which one is not an iso-electronic pair ?

- (1) $\text{Fe}^{2+}, \text{Mn}^{2+}$
 (2) $\text{O}^{2-}, \text{F}^-$
 (3) $\text{Na}^+, \text{Mg}^{2+}$
 (4) $\text{Mn}^{2+}, \text{Fe}^{3+}$

96. The molar conductivity of 0.007 M acetic acid is $20 \text{ S cm}^2 \text{ mol}^{-1}$. What is the dissociation constant of acetic acid ? Choose the correct option.

$$\left[\begin{array}{l} \Lambda_{\text{H}^+}^\circ = 350 \text{ S cm}^2 \text{ mol}^{-1} \\ \Lambda_{\text{CH}_3\text{COO}^-}^\circ = 50 \text{ S cm}^2 \text{ mol}^{-1} \end{array} \right]$$

- (1) $2.50 \times 10^{-5} \text{ mol L}^{-1}$
 (2) $1.75 \times 10^{-4} \text{ mol L}^{-1}$
 (3) $2.50 \times 10^{-4} \text{ mol L}^{-1}$
 (4) $1.75 \times 10^{-5} \text{ mol L}^{-1}$

97. Which of the following molecules is non-polar in nature ?

- (1) NO_2
 (2) POCl_3
 (3) CH_2O
 (4) SbCl_5

98. Match List - I with List - II.

List - I		List - II	
(a)	$[\text{Fe}(\text{CN})_6]^{3-}$	(i)	5.92 BM
(b)	$[\text{Fe}(\text{H}_2\text{O})_6]^{3+}$	(ii)	0 BM
(c)	$[\text{Fe}(\text{CN})_6]^{4-}$	(iii)	4.90 BM
(d)	$[\text{Fe}(\text{H}_2\text{O})_6]^{2+}$	(iv)	1.73 BM

Choose the **correct** answer from the options given below.

- (1) (a)-(iv), (b)-(i), (c)-(ii), (d)-(iii)
 (2) (a)-(iv), (b)-(ii), (c)-(i), (d)-(iii)
 (3) (a)-(ii), (b)-(iv), (c)-(iii), (d)-(i)
 (4) (a)-(i), (b)-(iii), (c)-(iv), (d)-(ii)

99. Choose the correct option for the total pressure (in atm.) in a mixture of 4 g O_2 and 2 g H_2 confined in a total volume of one litre at 0°C is :

[Given $R = 0.082 \text{ L atm mol}^{-1} \text{ K}^{-1}$, $T = 273 \text{ K}$]

- (1) 26.02
 (2) 2.518
 (3) 2.602
 (4) 25.18

100. In which one of the following arrangements the given sequence is not strictly according to the properties indicated against it ?

- (1) $\text{CO}_2 < \text{SiO}_2$: Increasing
 $< \text{SnO}_2 < \text{PbO}_2$ oxidizing power
- (2) $\text{HF} < \text{HCl}$: Increasing acidic
 $< \text{HBr} < \text{HI}$ strength
- (3) $\text{H}_2\text{O} < \text{H}_2\text{S}$: Increasing pK_a
 $< \text{H}_2\text{Se} < \text{H}_2\text{Te}$ values
- (4) $\text{NH}_3 < \text{PH}_3$: Increasing
 $< \text{AsH}_3 < \text{SbH}_3$ acidic character

Section - A (Biology : Botany)

101. Mutations in plant cells can be induced by :

- (1) Zeatin
 (2) Kinetin
 (3) Infrared rays
 (4) Gamma rays

102. Which of the following is an **incorrect** statement ?

- (1) Nuclear pores act as passages for proteins and RNA molecules in both directions between nucleus and cytoplasm.
- (2) Mature sieve tube elements possess a conspicuous nucleus and usual cytoplasmic organelles.
- (3) Microbodies are present both in plant and animal cells.
- (4) The perinuclear space forms a barrier between the materials present inside the nucleus and that of the cytoplasm.

103. The term used for transfer of pollen grains from anthers of one plant to stigma of a different plant which, during pollination, brings genetically different types of pollen grains to stigma, is :

- (1) Cleistogamy
 (2) Xenogamy
 (3) Geitonogamy
 (4) Chasmogamy

104. The factor that leads to Founder effect in a population is :

- (1) Genetic drift
 (2) Natural selection
 (3) Genetic recombination
 (4) Mutation

105. Genera like *Selaginella* and *Salvinia* produce two kinds of spores. Such plants are known as :

- (1) Heterosporous
 (2) Homosorus
 (3) Heterosorus
 (4) Homosporous

106. The production of gametes by the parents, formation of zygotes, the F_1 and F_2 plants, can be understood from a diagram called :

- (1) Net square
 (2) Bullet square
 (3) Punch square
 (4) Punnett square

107. Diadelphous stamens are found in :

- (1) China rose and citrus
 (2) China rose
 (3) Citrus
 (4) Pea

108. Match List - I with List - II.

List - I		List - II	
(a)	Cohesion	(i)	More attraction in liquid phase
(b)	Adhesion	(ii)	Mutual attraction among water molecules
(c)	Surface tension	(iii)	Water loss in liquid phase
(d)	Guttation	(iv)	Attraction towards polar surfaces

Choose the **correct** answer from the options given below.

- (a) (b) (c) (d)
- (1) (ii) (i) (iv) (iii)
 (2) (ii) (iv) (i) (iii)
 (3) (iv) (iii) (ii) (i)
 (4) (iii) (i) (iv) (ii)

109. Gemmae are present in :

- (1) Some Liverworts
 (2) Mosses
 (3) Pteridophytes
 (4) Some Gymnosperms

110. A typical angiosperm embryo sac at maturity is :

- (1) 8-nucleate and 8-celled
 (2) 8-nucleate and 7-celled
 (3) 7-nucleate and 8-celled
 (4) 7-nucleate and 7-celled

111. In spite of interspecific competition in nature, which mechanism the competing species might have evolved for their survival ?

- (1) Predation
 (2) Resource partitioning
 (3) Competitive release
 (4) Mutualism

112. During the purification process for recombinant DNA technology, addition of chilled ethanol precipitates out :

- (1) Polysaccharides
 (2) RNA
 (3) DNA
 (4) Histones

113. DNA strands on a gel stained with ethidium bromide when viewed under UV radiation, appear as :
- (1) Bright blue bands
 - (2) Yellow bands
 - (3) Bright orange bands
 - (4) Dark red bands
114. Which of the following algae produce Carrageen ?
- (1) Blue-green algae
 - (2) Green algae
 - (3) Brown algae
 - (4) Red algae
115. Plants follow different pathways in response to environment or phases of life to form different kinds of structures. This ability is called :
- (1) Maturity
 - (2) Elasticity
 - (3) Flexibility
 - (4) Plasticity
116. Which of the following plants is monoecious ?
- (1) *Cycas circinalis*
 - (2) *Carica papaya*
 - (3) Chara
 - (4) *Marchantia polymorpha*
117. The site of perception of light in plants during photoperiodism is :
- (1) Leaf
 - (2) Shoot apex
 - (3) Stem
 - (4) Axillary bud
118. The amount of nutrients, such as carbon, nitrogen, phosphorus and calcium present in the soil at any given time, is referred as :
- (1) Standing crop
 - (2) Climax
 - (3) Climax community
 - (4) Standing state
119. Match List - I with List - II.

List - I		List - II	
(a)	Lenticels	(i)	Phellogen
(b)	Cork cambium	(ii)	Suberin deposition
(c)	Secondary cortex	(iii)	Exchange of gases
(d)	Cork	(iv)	Phelloderm

Choose the **correct** answer from the options given below.

- | | | | | |
|-----|------------|------------|------------|------------|
| | (a) | (b) | (c) | (d) |
| (1) | (iv) | (ii) | (i) | (iii) |
| (2) | (iv) | (i) | (iii) | (ii) |
| (3) | (iii) | (i) | (iv) | (ii) |
| (4) | (ii) | (iii) | (iv) | (i) |

120. Which of the following stages of meiosis involves division of centromere ?
- (1) Telophase II
 - (2) Metaphase I
 - (3) Metaphase II
 - (4) Anaphase II
121. The first stable product of CO₂ fixation in sorghum is :
- (1) Phosphoglyceric acid
 - (2) Pyruvic acid
 - (3) Oxaloacetic acid
 - (4) Succinic acid
122. Which of the following statements is **not** correct ?
- (1) Pyramid of numbers in a grassland ecosystem is upright.
 - (2) Pyramid of biomass in sea is generally inverted.
 - (3) Pyramid of biomass in sea is generally upright.
 - (4) Pyramid of energy is always upright.
123. Which of the following algae contains mannitol as reserve food material ?
- (1) *Ulothrix*
 - (2) *Ectocarpus*
 - (3) *Gracilaria*
 - (4) *Volvox*
124. When gene targetting involving gene amplification is attempted in an individual's tissue to treat disease, it is known as :
- (1) Safety testing
 - (2) Biopiracy
 - (3) Gene therapy
 - (4) Molecular diagnosis
125. Match List - I with List - II.

List - I		List - II	
(a)	Cristae	(i)	Primary constriction in chromosome
(b)	Thylakoids	(ii)	Disc-shaped sacs in Golgi apparatus
(c)	Centromere	(iii)	Infoldings in mitochondria
(d)	Cisternae	(iv)	Flattened membranous sacs in stroma of plastids

Choose the **correct** answer from the options given below.

- | | | | | |
|-----|------------|------------|------------|------------|
| | (a) | (b) | (c) | (d) |
| (1) | (ii) | (iii) | (iv) | (i) |
| (2) | (iv) | (iii) | (ii) | (i) |
| (3) | (i) | (iv) | (iii) | (ii) |
| (4) | (iii) | (iv) | (i) | (ii) |

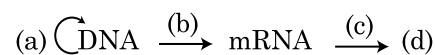
126. Match List - I with List - II.

List - I		List - II	
(a)	Protoplast fusion	(i)	Totipotency
(b)	Plant tissue culture	(ii)	Pomato
(c)	Meristem culture	(iii)	Somaclones
(d)	Micropropagation	(iv)	Virus free plants

Choose the **correct** answer from the options given below.

- | | (a) | (b) | (c) | (d) |
|-----|-------|-------|------|-------|
| (1) | (iv) | (iii) | (ii) | (i) |
| (2) | (iii) | (iv) | (ii) | (i) |
| (3) | (ii) | (i) | (iv) | (iii) |
| (4) | (iii) | (iv) | (i) | (ii) |

127. Complete the flow chart on central dogma.



- (a)-Transduction; (b)-Translation; (c)-Replication; (d)-Protein
- (a)-Replication; (b)-Transcription; (c)-Transduction; (d)-Protein
- (a)-Translation; (b)-Replication; (c)-Transcription; (d)-Transduction
- (a)-Replication; (b)-Transcription; (c)-Translation; (d)-Protein

128. In the equation $GPP - R = NPP$

R represents :

- Respiration losses
- Radiant energy
- Retardation factor
- Environment factor

129. When the centromere is situated in the middle of two equal arms of chromosomes, the chromosome is referred as :

- Acrocentric
- Metacentric
- Telocentric
- Sub-metacentric

130. The plant hormone used to destroy weeds in a field is :

- IBA
- IAA
- NAA
- 2, 4-D

131. Which of the following are **not** secondary metabolites in plants ?

- Rubber, gums
- Morphine, codeine
- Amino acids, glucose
- Vinblastin, curcumin

132. Amensalism can be represented as :

- Species A (+) ; Species B (0)
- Species A (-) ; Species B (0)
- Species A (+) ; Species B (+)
- Species A (-) ; Species B (-)

133. Which of the following is **not** an application of PCR (Polymerase Chain Reaction) ?

- Detection of gene mutation
- Molecular diagnosis
- Gene amplification
- Purification of isolated protein

134. Which of the following is a **correct** sequence of steps in a PCR (Polymerase Chain Reaction) ?

- Annealing, Denaturation, Extension
- Denaturation, Annealing, Extension
- Denaturation, Extension, Annealing
- Extension, Denaturation, Annealing

135. Match List - I with List - II.

List - I		List - II	
(a)	Cells with active cell division capacity	(i)	Vascular tissues
(b)	Tissue having all cells similar in structure and function	(ii)	Meristematic tissue
(c)	Tissue having different types of cells	(iii)	Sclereids
(d)	Dead cells with highly thickened walls and narrow lumen	(iv)	Simple tissue

Select the **correct** answer from the options given below.

- | | (a) | (b) | (c) | (d) |
|-----|-------|-------|-------|-------|
| (1) | (iii) | (ii) | (iv) | (i) |
| (2) | (ii) | (iv) | (i) | (iii) |
| (3) | (iv) | (iii) | (ii) | (i) |
| (4) | (i) | (ii) | (iii) | (iv) |

Section - B (Biology : Botany)

136. Which of the following statements is **correct** ?

- (1) Some of the organisms can fix atmospheric nitrogen in specialized cells called sheath cells.
- (2) Fusion of two cells is called Karyogamy.
- (3) Fusion of protoplasts between two motile on non-motile gametes is called plasmogamy.
- (4) Organisms that depend on living plants are called saprophytes.

137. In the exponential growth equation

$$N_t = N_0 e^{rt}$$

e represents :

- (1) The base of geometric logarithms
- (2) The base of number logarithms
- (3) The base of exponential logarithms
- (4) The base of natural logarithms

138. In some members of which of the following pairs of families, pollen grains retain their viability for months after release ?

- (1) Rosaceae ; Leguminosae
- (2) Poaceae ; Rosaceae
- (3) Poaceae ; Leguminosae
- (4) Poaceae ; Solanaceae

139. Match **Column - I** with **Column - II**.

Column - I		Column - II	
(a)	<i>Nitrococcus</i>	(i)	Denitrification
(b)	<i>Rhizobium</i>	(ii)	Conversion of ammonia to nitrite
(c)	<i>Thiobacillus</i>	(iii)	Conversion of nitrite to nitrate
(d)	<i>Nitrobacter</i>	(iv)	Conversion of atmospheric nitrogen to ammonia

Choose the **correct** answer from options given below.

- (a) (b) (c) (d)
- (1) (iv) (iii) (ii) (i)
- (2) (ii) (iv) (i) (iii)
- (3) (i) (ii) (iii) (iv)
- (4) (iii) (i) (iv) (ii)

140. Match **List - I** with **List - II**.

List - I		List - II	
(a)	S phase	(i)	Proteins are synthesized
(b)	G ₂ phase	(ii)	Inactive phase
(c)	Quiescent stage	(iii)	Interval between mitosis and initiation of DNA replication
(d)	G ₁ phase	(iv)	DNA replication

Choose the **correct** answer from the options given below.

- (a) (b) (c) (d)
- (1) (ii) (iv) (iii) (i)
- (2) (iii) (ii) (i) (iv)
- (3) (iv) (ii) (iii) (i)
- (4) (iv) (i) (ii) (iii)

141. Match **List - I** with **List - II**.

List - I		List - II	
(a)	Protein	(i)	C = C double bonds
(b)	Unsaturated fatty acid	(ii)	Phosphodiester bonds
(c)	Nucleic acid	(iii)	Glycosidic bonds
(d)	Polysaccharide	(iv)	Peptide bonds

Choose the **correct** answer from the options given below.

- (a) (b) (c) (d)
- (1) (iv) (iii) (i) (ii)
- (2) (iv) (i) (ii) (iii)
- (3) (i) (iv) (iii) (ii)
- (4) (ii) (i) (iv) (iii)

142. Match **Column - I** with **Column - II**.

Column - I	Column - II
(a) $\% \frac{\phi}{\psi} K_{(5)} C_{1+2+(2)} A_{(9)+1} G_1$	(i) Brassicaceae
(b) $\oplus \frac{\phi}{\psi} K_{(5)} \overline{C_{(5)} A_5} G_2$	(ii) Liliaceae
(c) $\oplus \frac{\phi}{\psi} \overline{P_{(3+3)} A_{3+3}} G_{(3)}$	(iii) Fabaceae
(d) $\oplus \frac{\phi}{\psi} K_{2+2} C_4 A_{2-4} G_{(2)}$	(iv) Solanaceae

Select the **correct** answer from the options given below.

- (a) (b) (c) (d)
- (1) (iv) (ii) (i) (iii)
- (2) (iii) (iv) (ii) (i)
- (3) (i) (ii) (iii) (iv)
- (4) (ii) (iii) (iv) (i)

143. What is the role of RNA polymerase III in the process of transcription in eukaryotes ?
- (1) Transcribes only snRNAs
 - (2) Transcribes rRNAs (28S, 18S and 5.8S)
 - (3) Transcribes tRNA, 5s rRNA and snRNA
 - (4) Transcribes precursor of mRNA
144. Which of the following statements is **incorrect** ?
- (1) Cyclic photophosphorylation involves both PS I and PS II.
 - (2) Both ATP and $\text{NADPH} + \text{H}^+$ are synthesized during non-cyclic photophosphorylation.
 - (3) Stroma lamellae have PS I only and lack NADP reductase.
 - (4) Grana lamellae have both PS I and PS II.
145. Now a days it is possible to detect the mutated gene causing cancer by allowing radioactive probe to hybridise its complimentary DNA in a clone of cells, followed by its detection using autoradiography because :
- (1) mutated gene does not appear on photographic film as the probe has complementarity with it.
 - (2) mutated gene partially appears on a photographic film.
 - (3) mutated gene completely and clearly appears on a photographic film.
 - (4) mutated gene does not appear on a photographic film as the probe has no complementarity with it.
146. DNA fingerprinting involves identifying differences in some specific regions in DNA sequence, called as :
- (1) Polymorphic DNA
 - (2) Satellite DNA
 - (3) Repetitive DNA
 - (4) Single nucleotides
147. Which of the following statements is **incorrect** ?
- (1) Oxidation-reduction reactions produce proton gradient in respiration.
 - (2) During aerobic respiration, role of oxygen is limited to the terminal stage.
 - (3) In ETC (Electron Transport Chain), one molecule of $\text{NADH} + \text{H}^+$ gives rise to 2 ATP molecules, and one FADH_2 gives rise to 3 ATP molecules.
 - (4) ATP is synthesized through complex V.
148. Plasmid pBR322 has PstI restriction enzyme site within gene amp^R that confers ampicillin resistance. If this enzyme is used for inserting a gene for β -galactoside production and the recombinant plasmid is inserted in an *E.coli* strain
- (1) it will be able to produce a novel protein with dual ability.
 - (2) it will not be able to confer ampicillin resistance to the host cell.
 - (3) the transformed cells will have the ability to resist ampicillin as well as produce β -galactoside.
 - (4) it will lead to lysis of host cell.
149. Identify the **correct** statement.
- (1) Split gene arrangement is characteristic of prokaryotes.
 - (2) In capping, methyl guanosine triphosphate is added to the 3' end of hnRNA.
 - (3) RNA polymerase binds with Rho factor to terminate the process of transcription in bacteria.
 - (4) The coding strand in a transcription unit is copied to an mRNA.
150. Select the **correct** pair.
- (1) Loose parenchyma cells - Spongy rupturing the epidermis parenchyma and forming a lens-shaped opening in bark
 - (2) Large colorless empty cells in the epidermis of grass leaves - Subsidiary cells
 - (3) In dicot leaves, vascular bundles are surrounded by large thick-walled cells - Conjunctive tissue
 - (4) Cells of medullary rays that form part of cambial ring - Interfascicular cambium

Section - A (Biology : Zoology)

151. Match List - I with List - II.

List - I		List - II	
(a)	<i>Aspergillus niger</i>	(i)	Acetic Acid
(b)	<i>Acetobacter aceti</i>	(ii)	Lactic Acid
(c)	<i>Clostridium butylicum</i>	(iii)	Citric Acid
(d)	<i>Lactobacillus</i>	(iv)	Butyric Acid

Choose the **correct** answer from the options given below.

- | | (a) | (b) | (c) | (d) |
|-----|-------|-------|-------|-------|
| (1) | (iv) | (ii) | (i) | (iii) |
| (2) | (iii) | (i) | (iv) | (ii) |
| (3) | (i) | (ii) | (iii) | (iv) |
| (4) | (ii) | (iii) | (i) | (iv) |

152. Succus entericus is referred to as :

- (1) Chyme
- (2) Pancreatic juice
- (3) Intestinal juice
- (4) Gastric juice

153. Receptors for sperm binding in mammals are present on :

- (1) Zona pellucida
- (2) Corona radiata
- (3) Vitelline membrane
- (4) Perivitelline space

154. The fruit fly has 8 chromosomes (2n) in each cell. During interphase of Mitosis if the number of chromosomes at G₁ phase is 8, what would be the number of chromosomes after S phase ?

- (1) 32
- (2) 8
- (3) 16
- (4) 4

155. Select the favourable conditions required for the formation of oxyhaemoglobin at the alveoli.

- (1) Low pO₂, low pCO₂, more H⁺, higher temperature
- (2) High pO₂, low pCO₂, less H⁺, lower temperature
- (3) Low pO₂, high pCO₂, more H⁺, higher temperature
- (4) High pO₂, high pCO₂, less H⁺, higher temperature

156. Match the following :

List - I		List - II	
(a)	<i>Physalia</i>	(i)	Pearl oyster
(b)	<i>Limulus</i>	(ii)	Portuguese Man of War
(c)	<i>Ancylostoma</i>	(iii)	Living fossil
(d)	<i>Pinctada</i>	(iv)	Hookworm

Choose the **correct** answer from the options given below.

- | | (a) | (b) | (c) | (d) |
|-----|------|-------|-------|------|
| (1) | (i) | (iv) | (iii) | (ii) |
| (2) | (ii) | (iii) | (i) | (iv) |
| (3) | (iv) | (i) | (iii) | (ii) |
| (4) | (ii) | (iii) | (iv) | (i) |

157. Which stage of meiotic prophase shows terminalisation of chiasmata as its distinctive feature ?

- (1) Pachytene
- (2) Leptotene
- (3) Zygotene
- (4) Diakinesis

158. If Adenine makes 30% of the DNA molecule, what will be the percentage of Thymine, Guanine and Cytosine in it ?

- (1) T : 20 ; G : 25 ; C : 25
- (2) T : 20 ; G : 30 ; C : 20
- (3) T : 20 ; G : 20 ; C : 30
- (4) T : 30 ; G : 20 ; C : 20

159. The partial pressures (in mm Hg) of oxygen (O₂) and carbon dioxide (CO₂) at alveoli (the site of diffusion) are :

- (1) pO₂ = 159 and pCO₂ = 0.3
- (2) pO₂ = 104 and pCO₂ = 40
- (3) pO₂ = 40 and pCO₂ = 45
- (4) pO₂ = 95 and pCO₂ = 40

160. Read the following statements.

- (a) Metagenesis is observed in Helminths.
- (b) Echinoderms are triploblastic and coelomate animals.
- (c) Round worms have organ-system level of body organization.
- (d) Comb plates present in ctenophores help in digestion.
- (e) Water vascular system is characteristic of Echinoderms.

Choose the **correct** answer from the options given below.

- (1) (b), (c) and (e) are correct
- (2) (c), (d) and (e) are correct
- (3) (a), (b) and (c) are correct
- (4) (a), (d) and (e) are correct

161. In a cross between a male and female, both heterozygous for sickle cell anaemia gene, what percentage of the progeny will be diseased ?
- (1) 100%
 - (2) 50%
 - (3) 75%
 - (4) 25%
162. Which of the following statements wrongly represents the nature of smooth muscle ?
- (1) These muscles are present in the wall of blood vessels
 - (2) These muscle have no striations
 - (3) They are involuntary muscles
 - (4) Communication among the cells is performed by intercalated discs
163. Which one of the following belongs to the family Muscidae ?
- (1) House fly
 - (2) Fire fly
 - (3) Grasshopper
 - (4) Cockroach
164. During the process of gene amplification using PCR, if very high temperature is not maintained in the beginning, then which of the following steps of PCR will be affected first ?
- (1) Ligation
 - (2) Annealing
 - (3) Extension
 - (4) Denaturation
165. Match List - I with List - II.
- | List - I | | List - II | |
|----------|--------------|-----------|--------------|
| (a) | Metamerism | (i) | Coelenterata |
| (b) | Canal system | (ii) | Ctenophora |
| (c) | Comb plates | (iii) | Annelida |
| (d) | Cnidoblasts | (iv) | Porifera |
- Choose the **correct** answer from the options given below.
- | | | | | |
|-----|------------|------------|------------|------------|
| | (a) | (b) | (c) | (d) |
| (1) | (iv) | (i) | (ii) | (iii) |
| (2) | (iv) | (iii) | (i) | (ii) |
| (3) | (iii) | (iv) | (i) | (ii) |
| (4) | (iii) | (iv) | (ii) | (i) |
166. Which one of the following is an example of Hormone releasing IUD ?
- (1) Multiload 375
 - (2) CuT
 - (3) LNG 20
 - (4) Cu 7
167. The centriole undergoes duplication during :
- (1) G₂ phase
 - (2) S-phase
 - (3) Prophase
 - (4) Metaphase
168. Which of the following characteristics is **incorrect** with respect to cockroach ?
- (1) 10th abdominal segment in both sexes, bears a pair of anal cerci.
 - (2) A ring of gastric caeca is present at the junction of midgut and hind gut.
 - (3) Hypopharynx lies within the cavity enclosed by the mouth parts.
 - (4) In females, 7th-9th sterna together form a genital pouch.
169. Dobson units are used to measure thickness of :
- (1) Troposphere
 - (2) CFCs
 - (3) Stratosphere
 - (4) Ozone
170. Veneral diseases can spread through :
- (a) Using sterile needles
 - (b) Transfusion of blood from infected person
 - (c) Infected mother to foetus
 - (d) Kissing
 - (e) Inheritance
- Choose the **correct** answer from the options given below.
- (1) (a) and (c) only
 - (2) (a), (b) and (c) only
 - (3) (b), (c) and (d) only
 - (4) (b) and (c) only
171. Which one of the following organisms bears hollow and pneumatic long bones ?
- (1) *Ornithorhynchus*
 - (2) *Neophron*
 - (3) *Hemidactylus*
 - (4) *Macropus*
172. Persons with 'AB' blood group are called as "Universal recipients". This is due to :
- (1) Absence of antibodies, anti-A and anti-B, in plasma
 - (2) Absence of antigens A and B on the surface of RBCs
 - (3) Absence of antigens A and B in plasma
 - (4) Presence of antibodies, anti-A and anti-B, on RBCs
173. The organelles that are included in the endomembrane system are :
- (1) Golgi complex, Endoplasmic reticulum, Mitochondria and Lysosomes
 - (2) Endoplasmic reticulum, Mitochondria, Ribosomes and Lysosomes
 - (3) Endoplasmic reticulum, Golgi complex, Lysosomes and Vacuoles
 - (4) Golgi complex, Mitochondria, Ribosomes and Lysosomes

174. A specific recognition sequence identified by endonucleases to make cuts at specific positions within the DNA is :
- (1) Poly(A) tail sequences
 - (2) Degenerate primer sequence
 - (3) Okazaki sequences
 - (4) Palindromic Nucleotide sequences
175. Identify the **incorrect** pair.
- (1) Drugs - Ricin
 - (2) Alkaloids - Codeine
 - (3) Toxin - Abrin
 - (4) Lectins - Concanavalin A
176. With regard to insulin choose correct options.
- (a) C-peptide is not present in mature insulin.
 - (b) The insulin produced by rDNA technology has C-peptide.
 - (c) The pro-insulin has C-peptide.
 - (d) A-peptide and B-peptide of insulin are interconnected by disulphide bridges.
- Choose the **correct** answer from the options given below.
- (1) (a) and (d) only
 - (2) (b) and (d) only
 - (3) (b) and (c) only
 - (4) (a), (c) and (d) only
177. Chronic auto immune disorder affecting neuro muscular junction leading to fatigue, weakening and paralysis of skeletal muscle is called as :
- (1) Gout
 - (2) Arthritis
 - (3) Muscular dystrophy
 - (4) Myasthenia gravis
178. Which of the following RNAs is not required for the synthesis of protein ?
- (1) siRNA
 - (2) mRNA
 - (3) tRNA
 - (4) rRNA
179. Which of the following is **not** an objective of Biofortification in crops ?
- (1) Improve micronutrient and mineral content
 - (2) Improve protein content
 - (3) Improve resistance to diseases
 - (4) Improve vitamin content
180. Erythropoietin hormone which stimulates R.B.C. formation is produced by :
- (1) Juxtaglomerular cells of the kidney
 - (2) Alpha cells of pancreas
 - (3) The cells of rostral adenohypophysis
 - (4) The cells of bone marrow
181. Which enzyme is responsible for the conversion of inactive fibrinogens to fibrins ?
- (1) Thrombokinase
 - (2) Thrombin
 - (3) Renin
 - (4) Epinephrine
182. For effective treatment of the disease, early diagnosis and understanding its pathophysiology is very important. Which of the following molecular diagnostic techniques is very useful for early detection ?
- (1) Hybridization Technique
 - (2) Western Blotting Technique
 - (3) Southern Blotting Technique
 - (4) ELISA Technique

183. Sphincter of oddi is present at :

- (1) Junction of jejunum and duodenum
- (2) Ileo-caecal junction
- (3) Junction of hepato-pancreatic duct and duodenum
- (4) Gastro-oesophageal junction

184. Which is the "Only enzyme" that has "Capability" to catalyse Initiation, Elongation and Termination in the process of transcription in prokaryotes ?

- (1) DNase
- (2) DNA dependent DNA polymerase
- (3) DNA dependent RNA polymerase
- (4) DNA Ligase

185. Match List - I with List - II.

List - I		List - II	
(a)	Vaults	(i)	Entry of sperm through Cervix is blocked
(b)	IUDs	(ii)	Removal of Vas deferens
(c)	Vasectomy	(iii)	Phagocytosis of sperms within the Uterus
(d)	Tubectomy	(iv)	Removal of fallopian tube

Choose the **correct** answer from the options given below.

- (a) (b) (c) (d)**
- (1) (iii) (i) (iv) (ii)
 - (2) (iv) (ii) (i) (iii)
 - (3) (i) (iii) (ii) (iv)
 - (4) (ii) (iv) (iii) (i)

Section - B (Biology : Zoology)

186. Match List - I with List - II.

List - I		List - II	
(a)	Scapula	(i)	Cartilaginous joints
(b)	Cranium	(ii)	Flat bone
(c)	Sternum	(iii)	Fibrous joints
(d)	Vertebral column	(iv)	Triangular flat bone

Choose the **correct** answer from the options given below.

- (a) (b) (c) (d)**
- (1) (iv) (iii) (ii) (i)
 - (2) (i) (iii) (ii) (iv)
 - (3) (ii) (iii) (iv) (i)
 - (4) (iv) (ii) (iii) (i)

187. Following are the statements with reference to 'lipids'.

- (a) Lipids having only single bonds are called unsaturated fatty acids.
- (b) Lecithin is a phospholipid.
- (c) Trihydroxy propane is glycerol.
- (d) Palmitic acid has 20 carbon atoms including carboxyl carbon.
- (e) Arachidonic acid has 16 carbon atoms.

Choose the **correct** answer from the options given below.

- (1) (b) and (e) only
- (2) (a) and (b) only
- (3) (c) and (d) only
- (4) (b) and (c) only

188. Match List - I with List - II.

List - I		List - II	
(a)	Allen's Rule	(i)	Kangaroo rat
(b)	Physiological adaptation	(ii)	Desert lizard
(c)	Behavioural adaptation	(iii)	Marine fish at depth
(d)	Biochemical adaptation	(iv)	Polar seal

Choose the **correct** answer from the options given below.

- (a) (b) (c) (d)**
- (1) (iv) (iii) (ii) (i)
 - (2) (iv) (ii) (iii) (i)
 - (3) (iv) (i) (iii) (ii)
 - (4) (iv) (i) (ii) (iii)

189. During muscular contraction which of the following events occur ?
- 'H' zone disappears
 - 'A' band widens
 - 'I' band reduces in width
 - Myosine hydrolyzes ATP, releasing the ADP and Pi
 - Z-lines attached to actins are pulled inwards
- Choose the **correct** answer from the options given below.
- (b), (d), (e), (a) only
 - (a), (c), (d), (e) only
 - (a), (b), (c), (d) only
 - (b), (c), (d), (e) only

190. Match List - I with List - II.

List - I		List - II	
(a)	Adaptive radiation	(i)	Selection of resistant varieties due to excessive use of herbicides and pesticides
(b)	Convergent evolution	(ii)	Bones of forelimbs in Man and Whale
(c)	Divergent evolution	(iii)	Wings of Butterfly and Bird
(d)	Evolution by anthropogenic action	(iv)	Darwin Finches

Choose the **correct** answer from the options given below.

- | | (a) | (b) | (c) | (d) |
|-----|-------|-------|-------|-------|
| (1) | (i) | (iv) | (iii) | (ii) |
| (2) | (iv) | (iii) | (ii) | (i) |
| (3) | (iii) | (ii) | (i) | (iv) |
| (4) | (ii) | (i) | (iv) | (iii) |

191. Assertion (A) :

A person goes to high altitude and experiences 'altitude sickness' with symptoms like breathing difficulty and heart palpitations.

Reason (R) :

Due to low atmospheric pressure at high altitude, the body does not get sufficient oxygen.

In the light of the above statements, choose the **correct** answer from the options given below.

- (A) is false but (R) is true
- Both (A) and (R) are true and (R) is the correct explanation of (A)
- Both (A) and (R) are true but (R) is not the correct explanation of (A)
- (A) is true but (R) is false

192. Which of these is not an important component of initiation of parturition in humans ?

- Release of Prolactin
- Increase in estrogen and progesterone ratio
- Synthesis of prostaglandins
- Release of Oxytocin

193. Which of the following secretes the hormone, relaxin, during the later phase of pregnancy ?

- Uterus
- Graafian follicle
- Corpus luteum
- Foetus

194. Match List - I with List - II.

List - I		List - II	
(a)	Filariasis	(i)	<i>Haemophilus influenzae</i>
(b)	Amoebiasis	(ii)	<i>Trichophyton</i>
(c)	Pneumonia	(iii)	<i>Wuchereria bancrofti</i>
(d)	Ringworm	(iv)	<i>Entamoeba histolytica</i>

Choose the **correct** answer from the options given below.

- | | (a) | (b) | (c) | (d) |
|-----|-------|-------|-------|-------|
| (1) | (ii) | (iii) | (i) | (iv) |
| (2) | (iv) | (i) | (iii) | (ii) |
| (3) | (iii) | (iv) | (i) | (ii) |
| (4) | (i) | (ii) | (iv) | (iii) |

195. Which of the following is **not** a step in Multiple Ovulation Embryo Transfer Technology (MOET) ?

- Fertilized eggs are transferred to surrogate mothers at 8-32 cell stage
- Cow is administered hormone having LH like activity for super ovulation
- Cow yields about 6-8 eggs at a time
- Cow is fertilized by artificial insemination

196. The Adenosine deaminase deficiency results into :

- (1) Addison's disease
- (2) Dysfunction of Immune system
- (3) Parkinson's disease
- (4) Digestive disorder

197. Which one of the following statements about Histones is **wrong** ?

- (1) Histones carry positive charge in the side chain.
- (2) Histones are organized to form a unit of 8 molecules.
- (3) The pH of histones is slightly acidic.
- (4) Histones are rich in amino acids - Lysine and Arginine.

198. **Statement I :**

The codon 'AUG' codes for methionine and phenylalanine.

Statement II :

'AAA' and 'AAG' both codons code for the amino acid lysine.

In the light of the above statements, choose the **correct** answer from the options given below.

- (1) **Statement I** is incorrect but **Statement II** is true
- (2) Both **Statement I** and **Statement II** are true
- (3) Both **Statement I** and **Statement II** are false
- (4) **Statement I** is correct but **Statement II** is false

199. Identify the types of cell junctions that help to stop the leakage of the substances across a tissue and facilitation of communication with neighbouring cells via rapid transfer of ions and molecules.

- (1) Adhering junctions and Gap junctions, respectively.
- (2) Gap junctions and Adhering junctions, respectively.
- (3) Tight junctions and Gap junctions, respectively.
- (4) Adhering junctions and Tight junctions, respectively.

200. Following are the statements about prostomium of earthworm.

- (a) It serves as a covering for mouth.
- (b) It helps to open cracks in the soil into which it can crawl.
- (c) It is one of the sensory structures.
- (d) It is the first body segment.

Choose the **correct** answer from the options given below.

- (1) (b) and (c) are correct
- (2) (a), (b) and (c) are correct
- (3) (a), (b) and (d) are correct
- (4) (a), (b), (c) and (d) are correct

- o o o -

P2

26

Space For Rough Work

Space For Rough Work